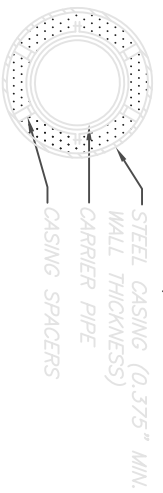


NOTES:  
 1) FILL VOID WITH NYS DOT ITEM #204.02  
 CONTROLLED LOW STRENGTH MATERIAL  
 (COMPRESSIVE STRENGTH: 50-100 PSI)



TYPICAL ROAD CROSSING DETAIL  
 N.T.S.

ISSUE DATE: SEPTEMBER 2018

TOWN & VILLAGE OF ELLICOTTVILLE

REVISIONS

DATE

COMMENTS

EVL ENG DEPT.

SEWER - S-07

